

Trintella 57 A - A PILOTHOUSE CUTTER

“AELOS II”

DIMENSIONS	LOA	57' / 17.3m	BEAM	16'3"/4.95m
	LWL	45' 11"/13.9m	DRAFT	7' / 2.1m

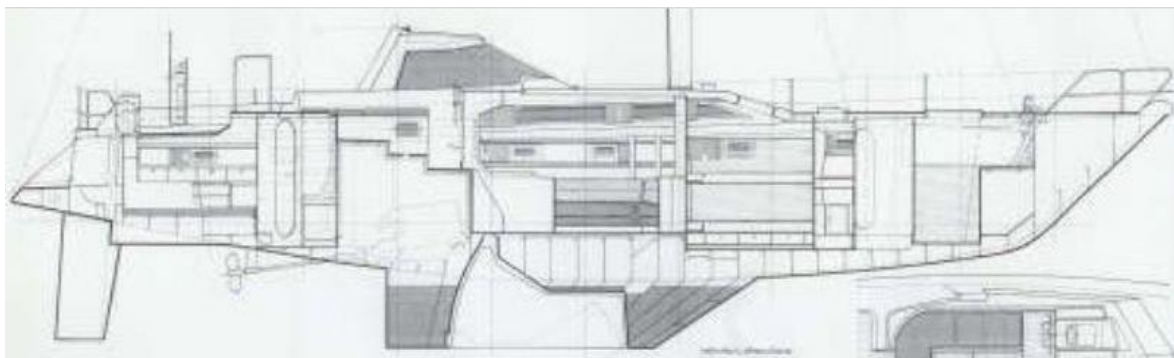
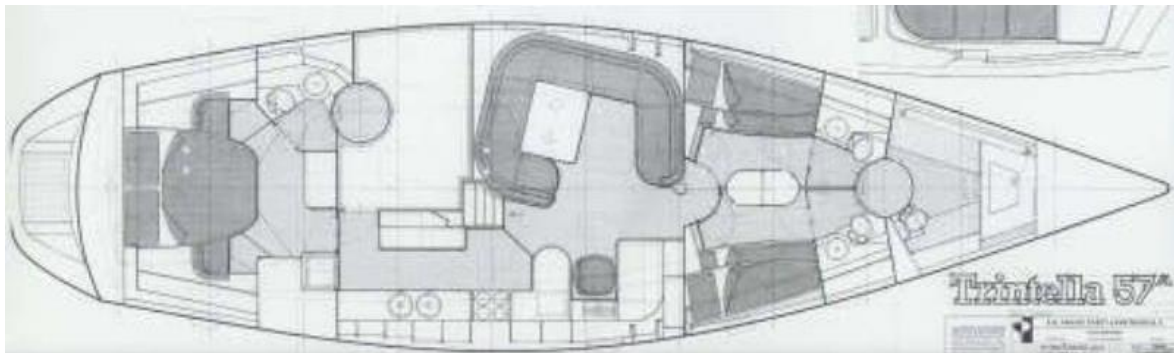
DISPLACEMENT	56,000lbs/25,424kg (approx)	FLAG	Greece
--------------	-----------------------------	------	--------

DESIGNER	E G Van de Stadt - HOLLAND
----------	----------------------------

DATE	Launched 1989
------	---------------

LOCATION	ATHENS - GREECE
----------	-----------------

PRICE	€ 345.000 incl VAT
-------	--------------------



CONSTRUCTION	<p>Aluminium hull and superstructure, white epoxy painted with International paint system. Aluminium decks laid in 1995 with 12mm ply sub-deck and 15mm teak, bedded on epoxy with rubber seams. Aft cockpit teak seats replaced 2012. Built with Lloyds Certification of hull construction. Pilothouse, guest cockpit, helmsman's cockpit, hydraulically operated opening to stern locker / swim platform.</p> <p>Scheel Keel.</p> <p>Wagner hydraulic steering system with two steering positions; cockpit pedestal with large diameter stainless steel with hide covered rim and small diameter stainless steel wheel with hide covered rim in pilothouse. Emergency tiller.</p> <p>Teak interior joinery. Teak and holly cabin soles-refurbished and re-varnished 2012. Corian galley counter tops and head compartment vanity units.</p>
--------------	---

HARDWARE	<p>10 x Lewmar ally framed acrylic deck hatches:</p> <p>1 x large fore hatch</p> <p>2 x medium, one over each guest cabin head compartment</p> <p>2 x large to foreside of coach roof</p> <p>2 x medium, one to each side of coach roof ahead of pilothouse windscreen</p> <p>1 x medium on pilothouse roof</p> <p>2 x medium on bridge deck, both over owner's cabin</p> <p>2 x fixed acrylic windows to each side in coach roof coamings</p> <p>3 x opening alloy framed windows in cockpit foot well (one into galley, one into engine room, one into owner's cabin)</p> <p>5 x large windows in pilothouse, 4 fixed, 1 opening</p> <p>10 x alloy hull windows, opening type with deadlights</p> <p>Integral alloy stem head fitting with 2 chain rollers</p> <p>Stainless steel bow pulpit with recess in sides to allow low genoa foot to pass through, port and starboard navigation lights.</p> <p>Aft corner vertical tubes to hold fishing rods etc.</p> <p>Teak seats to each corner with blue acrylic padded backrests</p> <p>Whittall stainless steel davits (1994) model ED18/19GW</p> <p>Life sling in satchel</p> <p>2 x U-shaped lifebuoys each with self igniting light</p> <p>Jonbuoy danbuoy in case</p> <p>Teak outboard motor stowage pad</p> <p>Stainless steel ensign socket with varnished teak staff</p> <p>Stainless steel antennae strut fitted with stern light and also, fitted to triangular upper platform</p> <p>2 x GPS antennae</p> <p>VHF aerial</p> <p>Folding stainless steel and teak boarding ladder in stowage brackets</p> <p>Stainless steel tube stanchions and lifelines</p> <p>One pair of braced stanchions each to port and starboard at boarding gates</p> <p>Natural anodized alloy perforated foot rails with enclosed fairleads to either side of bow, midships and stern, each having a large anodized deck cleat in way</p> <p>Bitts type natural anodized alloy cleats to each side deck and to aft deck</p> <p>Dorade ventilator box with 2 air scoops ahead of coach roof</p> <p>1 x double ventilator each side of coach roof ahead of pilothouse</p> <p>2 x long Lewmar alloy genoa sheet tracks each with 2 roller cars</p> <p>2x short Lewmar alloy stay sail tracks, set inboard of shrouds, each with 1 roller car</p> <p>Lewmar mainsheet track set on integral plinth on pilothouse roof</p> <p>2 x 3 - legged stainless-steel protection bars, one to each side of mast on coach roof</p> <p>2 x 3 – legged stainless steel protection bard=s, one to each side of bridge deck, each with 2 U-bolts in deck adjacent for lifeline attachment</p> <p>1 x U – bolt to each coaming for helmsman's lifeline attachment</p>
ELECTRONICS	<p>2 VHF</p> <p>Plotter with GPS</p> <p>SSB with entire backstay as antennae</p> <p>Radio</p> <p>Radar</p> <p>Instruments (Hydra)</p> <p>2 x GPS</p> <p>TV Aerial</p> <p>Satellite Dish for TV</p> <p>Main Autopilot</p> <p>Secondary Autopilot</p>

WINCHES	<p>Winches by Lewmar:</p> <p>2 x 16, one to each end of mainsheet track for car positioning</p> <p>Cockpit port side :</p> <p>55ST hydraulic – mainsheet</p> <p>65ST hydraulic – genoa sheet</p> <p>55ST manual – staysail sheet/runner tail</p> <p>Cockpit starboard side:</p> <p>55ST hydraulic– mainsail clew outhaul</p> <p>65ST hydraulic – genoa sheet</p> <p>55ST manual – staysail sheet/runner tail</p> <p>Simpson Lawrence capstan</p> <p>Control of anchor from main steering position in cockpit pedestal</p>
SPARS & RIGGING	<p>1998 Norseman twin spreader alloy mast, white painted, with hydraulic in-mast reefing.</p> <p>Rondal white painted alloy spinnaker pole fits to foreside of mast on long track</p> <p>Rondal white painted ally boom</p> <p>Rondal hydraulic genoa furler (2000)</p> <p>Profurl manual furler for staysail</p> <p>Navtec hydraulic vang and backstay tensioner</p> <p>Stainless steel rod forestay</p> <p>Other standing rigging in 1x19 stainless steel wire (twin backstays, baby stay, spare forestay, shrouds, mid shrouds and lowers)</p>
SAILS	<p>By Kafetzidakis (Athens):</p> <ul style="list-style-type: none"> • Furling genoa (2008) - hydraulic • Furling mainsail (2008) – hydraulic • Furling staysail (2008) • Genoa (2001) (in store) • Mainsail (2001) (in store) <p>By Hood Sails:</p> <ul style="list-style-type: none"> • 1.50z spinnaker in Doyle sock
ENGINE, ELECTRICS & MACHINERY	<p>Perkins 6-354 6-cylinder 125h diesel engine. Freshwater inter-cooled</p> <p>Gori 3-bladed folding propeller fitted 2002</p> <p>Spare MaxProp 3-bladed propeller</p> <p>Borg-Warner gearbox with 3:1 reduction</p> <p>Cruising speed 7 knots approx.</p> <p>Fuel consumption 1.5gph approx at 7 knots</p> <p>Generator ONAN 8 KVA</p> <p>Mastervolt 24/100 battery charger</p> <p>Mastervolt 24/700 inverter for TV and sockets</p> <p>Shore supply 110V / 220V</p> <p>Service batteries : 10 x 105 Ah Lifeline GPL31 gel batteries in parallel</p> <p>Engine start batteries: 2 x Tudor tsa-98.0 batteries (08/02)</p> <p>Generator start 12V battery</p> <p>Bow thruster</p> <p>Sea Recovery water maker delivers 25imp.galls / 30US galls. / 113litres per hr.</p> <p>Provision in engine room with hydraulic pipes led for 4 x dive bottles stored in rack in lazarette</p> <p>Bilge pumps : 2 x Jabsco electric</p> <p>2 x manual diaphragm (1 cockpit, 1 bilge)</p> <p>Fireboy heat activated / manual activated (06/98) fire extinguishing system, filled with FE-241 (Cholorotetrafluoroethrane)</p> <p>Tanks</p>

TANKS	Fuel : 264 imp.galls/ 317 US galls./ 1200 litres approx. Fresh water : 396 imp.galls/ 475 US galls./ 1800 litres approx. Black water : 1 tank available to serve port forward guest cabin. Grey water : 2 tanks for shower and sink water
--------------	--

More information can be sent on request.