

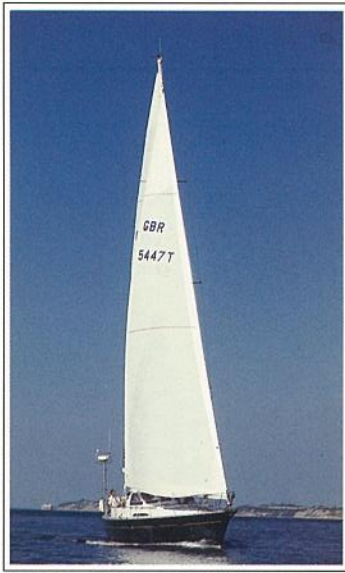
TRINTELLA 47

LUXURY

PERFORMANCE

ELEGANCE





TRINTELLA 47

VOTED LUXURY YACHT OF THE YEAR 1998 by 'Cruising World' magazine; the thoroughbred Trintella 47, hand built by the highly respected Trintella shipyard in the Netherlands, demonstrates the absolute finest in traditional craftsmanship embodied in a modern stylish yacht. Combining luxurious cruising comfort with exciting performance, the 47's track record for long ocean voyages has already established her as a true blue-water cruiser capable of safe and fast passage making. One yacht alone has covered 26,000 miles in two years, including three transatlantic passages.

The 47 offers an irresistible attraction to those who appreciate true character and understated elegance. The hallmark of each Trintella Yacht is undoubtedly the quality of craftsmanship that is evident in every detail of design and

construction. Synonymous with advanced design and build quality, Trintella has created more than 1,000 fine ocean-going yachts in over 44 years and the composite construction 47 continues this reputation with panache and grace.



Although unconstrained by tradition, the 47 builds on Trintella's heritage to incorporate the very latest construction techniques, so ensuring each new yacht is one of the finest in the world. The 47 is testament to a unique collaboration with the legendary Ron Holland, with his vast experience of designing the world's most prestigious yachts, coupled with Rene van der Velden's flair for interior design backed by Trintella shipyard's reputation for technical excellence. The Trintella 47 meets the highest specifications to satisfy the aspirations and expectations of our most demanding customer.



The beautiful Trintella 47, with her tried and tested blue-water sailing capabilities, are as relevant when idling around finest anchorages of the world as they are when making serious ocean passages. Ease of short-handed sailing and performance cruising are keywords used to express best what you can expect from a yacht of this pedigree.

On deck, the twin distinctive cockpit layout with 'hard-top' or 'Doghouse' arrangement offers a high degree of comfort and security for guests and crew and the 'sailing' cockpit benefits from all sail controls led aft with the convenience of optional electric self tailing winches falling easily to hand for the helmsman.



The modern powerful rig with swept back spreaders and without running backstays has been purpose designed to provide a perfectly balanced sail plan which is delightfully easy to handle and boasts the significant advantage of a

self tacking jib. This combination ensures a yacht which is a true joy to sail. She can be tacked easily by the helmsman alone and the rod steering ensures a direct 'feel' from the deep spade rudder and with a lead keel for sure-footed sea

keeping qualities. While her comforts and luxurious appearance are her most obvious attributes, her performance is further enhanced by the application of the most sophisticated technology. Computer aided design dramatically

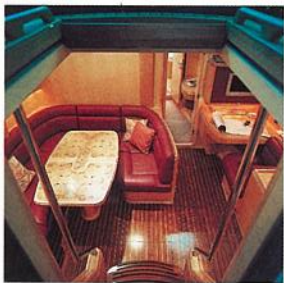
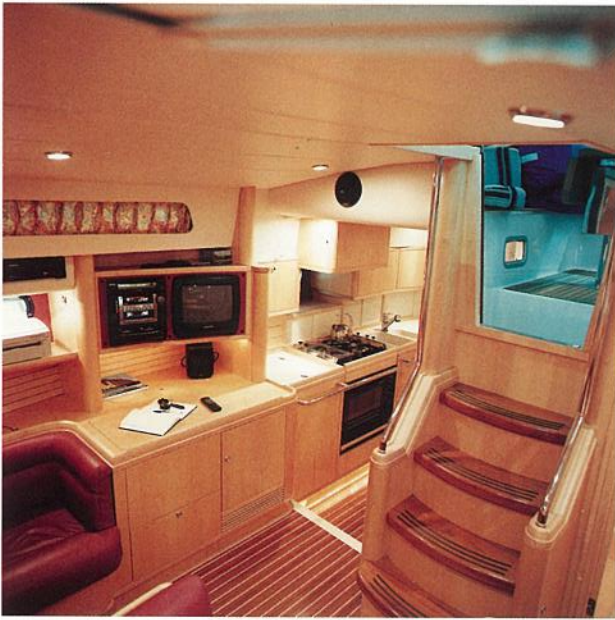


improves hull and keel profile providing superior stability and speed, while the use of aramid composites makes for enhanced safety characteristics. A sandwich construction, utilising the technologically advanced

'SCRIMP' process, ensures great strength and lightweight qualities. The application of vinylester resin significantly contributes to osmosis protection and is further promoted by the 'SCRIMP' construction process.

Advanced engineering techniques complemented by efficient sail management systems ensure the Trintella 47 is a thoroughly modern yacht that combines the best traditional values of craftsmanship with the demands of the modern day.

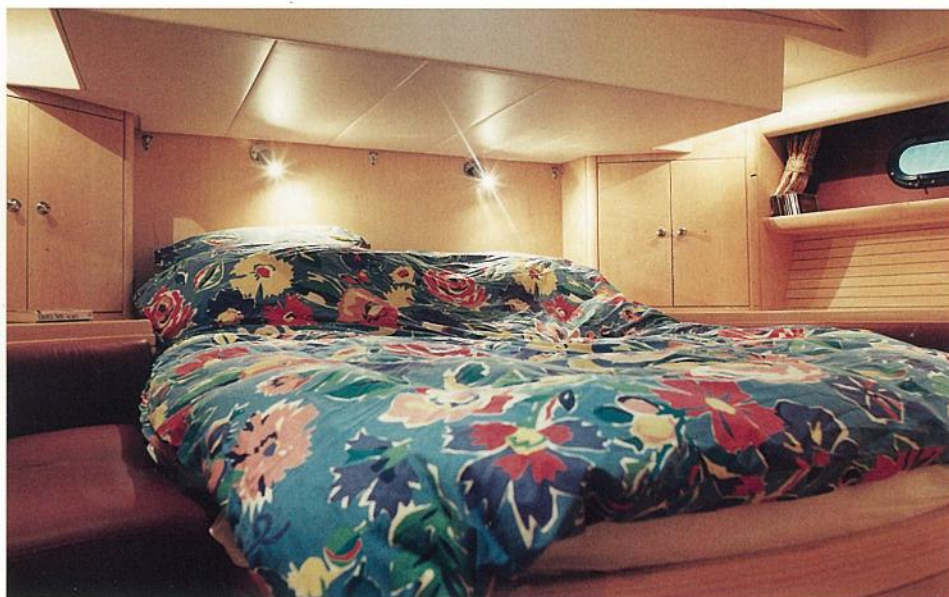
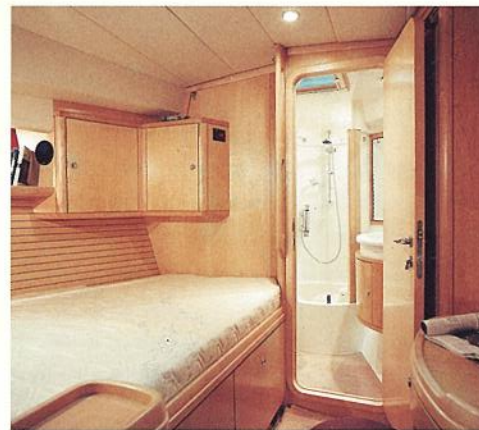




The unashamedly luxurious appointments of the Trintella 47 are both spacious and highly functional, with generous headroom of 1.95m (6'7") or more throughout. Practical features abound, including the heavily

insulated walk-in engine room that will also discreetly house options such as a work bench and vice, a generator, water maker and hydraulic systems. Thoughtful but less obvious details include standard features such as

cedar lined hanging lockers in each cabin which keep your clothing fresh and moth-free and an entertainment centre boasting TV/Video and CD player. Above all, Rene van der Velden's particular talent combines careful



planning of the interior spaces with the delicate art of selecting woods and fabrics to create an environment that makes extended cruising a constant delight. Finely styled, and elegant without being ostentatious,

you can choose a wide selection of upholstery fabrics and materials to create a yacht that is as comfortable as your home and express your own individuality to the same degree. Available in two layouts,

the Trintella 47 can provide accommodation for up to six people, with a saloon that has comfortable seating for six and is complemented by a spacious galley designed to be safe and secure in heavy seas. You can choose to have two

large cabins fore and aft (each with an en-suite WC and separate shower compartment). Alternatively, the workshop space can be fitted out with a twin cabin with bunk beds. A comprehensively

equipped navigation station carefully positioned on the starboard of the saloon is a feature of the 47 and provides the perfect blend of form and function.

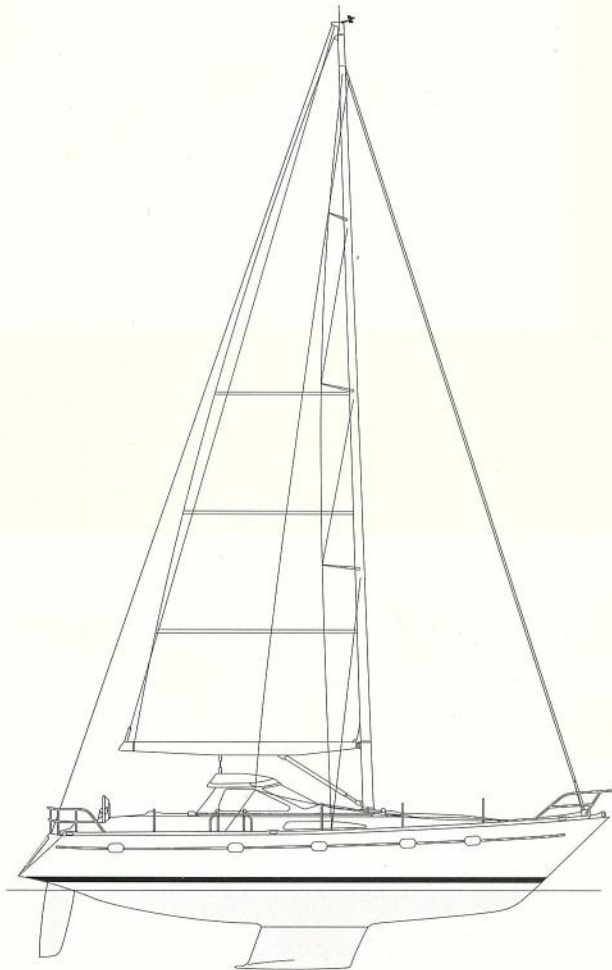
SPECIFICATION

Each Trintella is built to the highest quality in terms of design specification, craftsmanship and technological development, so ensuring quality standards you can trust. For further reassurance, each yacht is 100% guaranteed for one year from delivery, with all fixtures, fittings and equipment installed in the yacht also carrying the manufacturers' warranties and guarantees.

Besides the standard specifications detailed below, there are many variations and options that you can choose to incorporate in the design and

construction of your yacht. However you design and fit your boat, it will naturally be dockside tested before delivery, and then will undergo a full technical sail trial after delivery.

The Trintella philosophy of total quality is geared to creating confidence: our highly qualified and dedicated craftsmen demand the utmost from themselves, as indeed our owners demand the best from their yachts.



Dimensions

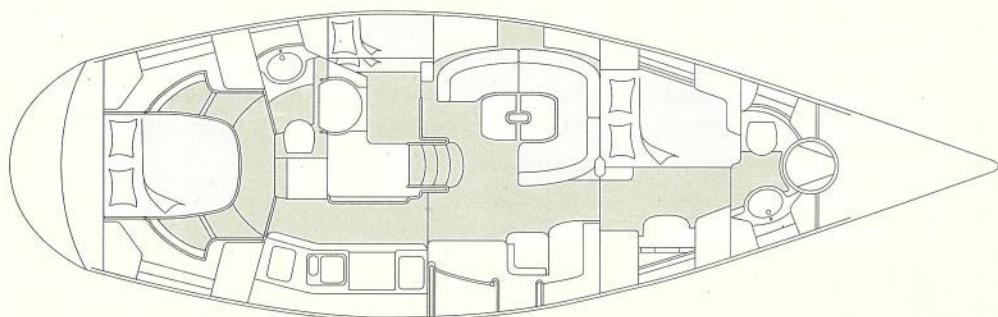
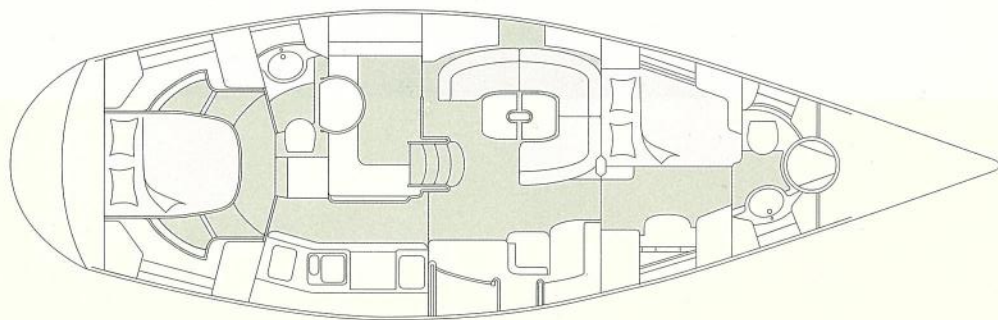
LOA.	47.25ft	14.40m
LWL.	37.84ft	11.53m
Beam max.	14.76ft	4.51m
Draft	6.45ft	1.95m
Displacement	16.00 tonnes	
I	62.00ft	19.2281m
J	17.72ft	5.40m
P	58.33ft	17.78m
E	18.37ft	5.60m
Bas	7.326ft	2.23m

Sail area

Main sail	55.50sqm
Blade	40.21sqm
Reacher	80.90sqm
Spinnaker	140.00sqm

Engine

Yanmar 4JH2-TBE	62 HP	45.6 kW
-----------------	-------	---------



Construction

The hull, deck, cockpit and superstructure are of sandwich construction, for greater strength and which also provides good noise and temperature insulation. Core materials are foam and balsa and the resin is vinylester, which is highly resistant to osmosis and offers enhanced adhesion to the fibres. The whole sandwich is reinforced with E-glass, Kevlar® and carbon fibres vacuum infused by means of the licensed SCRIMP® process and cured under vacuum for ultimate strength and lightweight construction.

Accommodation

The standard layout offers double cabins fore and aft, each with en-suite shower and wc, although the forward area may be arranged as two separate cabins, each with two single berths or as one double and two singles. All hanging lockers have cedar linings to keep your clothing fresh and moth-free.

The saloon features a large settee, as well as a foldaway table with seating for six. There is a fully equipped navigation area, with a large chart table, on the starboard side. The galley is positioned to starboard, aft of the saloon, and is laid out to ensure it is safe and secure in heavy weather.

All bulkheads and interior woodwork are of solid teak or teak-veneered top quality marine ply, but alternative finishes can be provided on request. Floors are laid in teak and holly, fitted with pull rings where appropriate. A wide range of attractive upholstery materials and designs is available.

Systems

The Yanmar 4JH2-T(B)E, 4 cylinder, turbo diesel, 62 HP engine and other main mechanical systems are mounted in the heavily insulated engine room, which is easily accessible for maintenance. Morse single lever controls and a start/stop panel are fitted at the aft steering position, while other instruments are mounted in the doghouse.

Steering gear is a solid rod system to give optimum sensitivity. An optional autopilot drive may be fitted here, and a second joystick operated steering position may be positioned in the doghouse.

Electrical systems

A double pole 12V circuit is fitted, with batteries charged by the standard engine-driven alternator, although additional systems are available. The electrical panel is mounted on the engine room bulkhead next to the galley, with battery monitoring gauges as well as the main circuit breakers.

Rigging

We will be pleased to advise you on the supply of sails to your specifications, but due to the large selection of sailmakers and sail cloths available, no sails are included in the standard specifications. All control lines are led aft to the cockpit, to keep the deck clear and to enable almost all sailing operations to be conducted from the security of the cockpit. All fittings are 316 stainless steel or aluminium. There is a deck stepped triple spreader aluminium mast with swept back spreaders, so precluding the need for running backstays. The mast is also fitted with a mainsail track. The aluminium boom has two internal slab reefs.

Paint finish

The hull/deck structure is coated with an osmosis resistant gelcoat, in a standard white finish, although other colours may be specified. The yacht is anti-fouled beneath the waterline. All interior wood work is matt varnished.

Deck

The deck features Trintella's trademark 'doghouse' centre cockpit for comfortable seating and excellent all round visibility. The aft cockpit provides an ergonomically designed helm station with easy access to all controls, and a Whitlock 'Reflex' steering pedestal with compass and leather covered wheel.

A large sail/chain locker is provided forward. There is also a jib car for the self-tacking jib and a customised heavy section anodised aluminium toerail. An electric anchor windlass is fitted, with two foot-switches. The stemhead fitting, stanchions, pulpit/pushpit, handholds, bathing ladder and chain plates are all 316 stainless steel.

Inventory

60lb (27 kg) CQR anchor with 50m, 10mm galvanised chain
4 x 16mm mooring lines (2 x 12m, 2 x 8m)
4 large fenders with rope tails
2 life buoys fitted in brackets on the pushpit
3 winch handles and storage pockets
Foghorn
Deck scrubber, boat hook and deck sponge
3 fire extinguishers
Crockery, cutlery and glasses for six

Delivery/Guarantee

The yacht will be dockside tested before delivery, which is ex-yard at Hertogenbosch. A technical sail trial is included after delivery from a Dutch port. The yacht will be guaranteed for a period of one year from delivery, and possible guarantee claims are based on execution in a Dutch harbour.

Trintella Yachts reserves the right to substitute items of a similar or higher quality than those described above.

A fully detailed specification will be prepared an application.



We are proud of the relationships we have developed with our customers. Your involvement begins even before you decide to purchase a new yacht from Trintella. A new Trintella is tailored to satisfy your individual requirements, so you may be assured that each of your decisions about the detail of design and specification can be discussed with the world's finest creators of luxury yachts.

Upon delivery, our experienced after-sales team provide full familiarisation training on all aspects of your yacht's performance and maintenance needs. And our relationship needn't end there as our authorised Trintella agents will ensure swift assistance no matter where you find yourself in the world. Technical advice or the supply of spares world-wide are only a phone call away from our experienced and dedicated service team.

The Trintella range includes the composite yachts from 42 to 65 feet and a range of aluminium custom and semi-custom sailing and power craft from 46 feet to 90 feet.

Trintella Yachts reserves the right to change the standard inventory and equipment specification without formal notice. Please refer to the current specification sheet for confirmation. Pictures in this brochure may show a boat with optional extras and alterations to layout.

For further information or assistance please call



Trintella Yachts
Hamble Point Marina,
School Lane, Hamble,
Southampton SO13 4NB
UK
Telephone
+44 (0)1703 457864
Facsimile
+44 (0)1703 455999
E-mail
sales@trintella.co.uk

Trintella Yachts
7078A Bembe Beach Road,
Annapolis MD 21403
USA
Telephone
+1 410 295 0194
Facsimile
+1 410 295 1270
E-mail
mtbelliott@compuserve.com

Trintella Shipyard BV
PO Box 445 NL-5201 AK
's-Hertogenbosh
The Netherlands
Telephone
+31 (0) 73 6457157
Facsimile
+31 (0) 73 6450573
E-mail
trintella@wxs.nl