



# Trintella

## 45



Jachtwerf Anne Wever bv



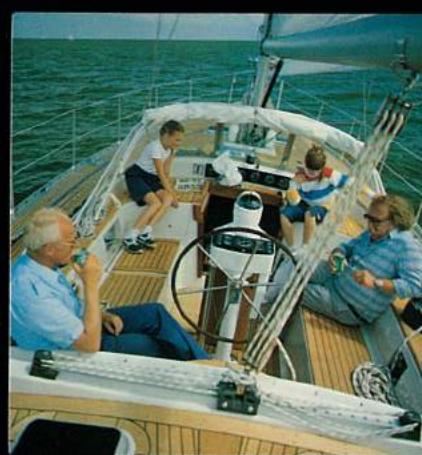


*A spacious deck thanks to an ingenious layout*



*Optimal sailing capacity under any course and any weather conditions*

*Almost all sailing manouvers can be handled from the cockpit, single-handedly if desired*



*A cockpit which offers comfort to your complete crew, and equipped for any kind of weather*



*The Trintella 45 - comfortable, complete, and extremely luxurious*

#### **Perfection to the nth degree**

For more than 25 years Trintella yachts have been renowned the world over for their design, quality of construction, high level of comfort and outstanding performance.

The Trintella has won the admiration of the most discriminating sailing enthusiasts. Designed by E.G. van de Stadt & Partners and built by Anne Wever bv of Holland, the Trintella range includes the 42, 45 and 53.

#### **Trintella 45**

This incomparable yacht has been designed for optimum safety, comfort and speed. Throughout the world the Trintella 45 is acknowledged as the most prestigious yacht of her type - her quality and style are outstanding wherever she sails. For many, the Trintella 45 has proved to be a once in a lifetime discovery.

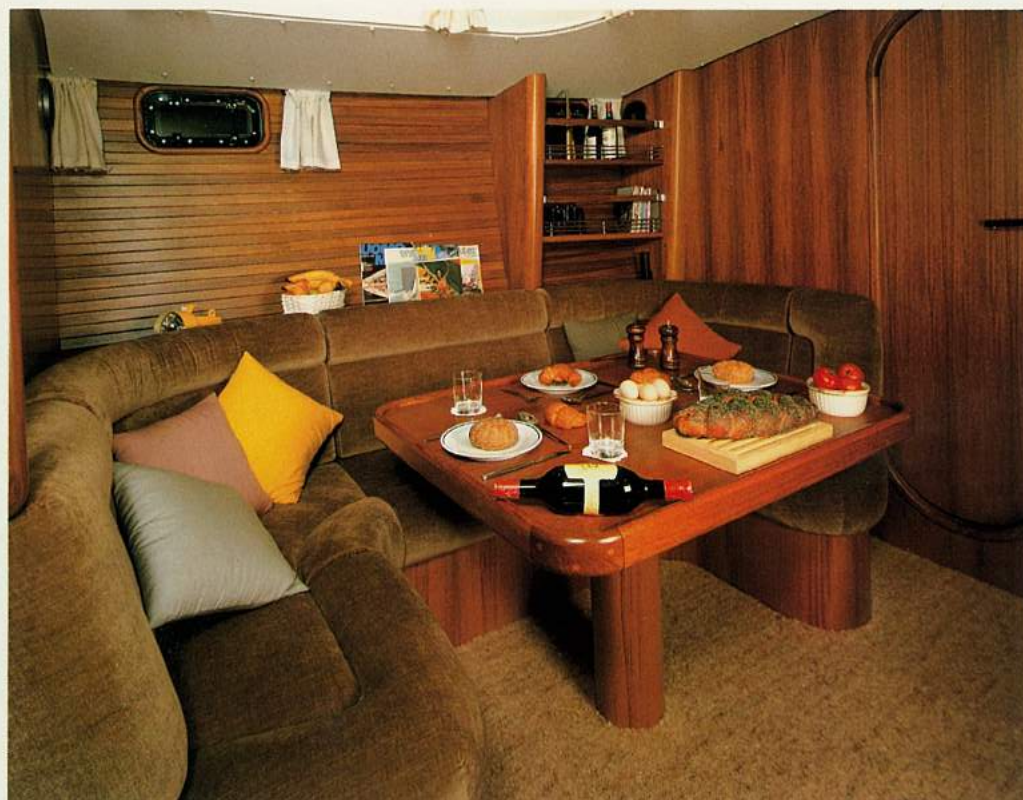


*Sanitation especially designed for the Trintella - modern, stylish and efficient - this domain may be furnished with additional equipment*

*The toilet/shower leaves nothing to be desired*



# Trintella 45



*A saloon which offers the same comfort one is used to at home*

*Maximum efficiency was the central aim in constructing the kitchen*



## **Design without compromise**

The goal of both the designers and builders of the yacht has been to achieve the optimum combination of speed with comfort, safety with beauty. The result is a yacht of superlative quality, built of the best materials by skilled and dedicated craftsmen. The Trintella 45 is a truly magnificent yacht.

## **Luxury from stem to stern**

Home comforts are always available - for both your weekend cruise and your world cruise. The Trintella 45 offers a discretely tasteful yet extremely luxurious interior. From guest cabins to the saloon, the navigatorium, the owners suite and the exceptionally practical galley you

The  
mu  
de:

with  
sta  
ma  
wh

Bu  
me  
Th  
bu  
re  
pr  
fre  
ke  
tio  
ele  
is  
ea  
the  
of  
bu  
pr  
su

**Jachtwerf  
Anne Wever bv**

Ertveldweg 3

5231 XA

Postbus 445

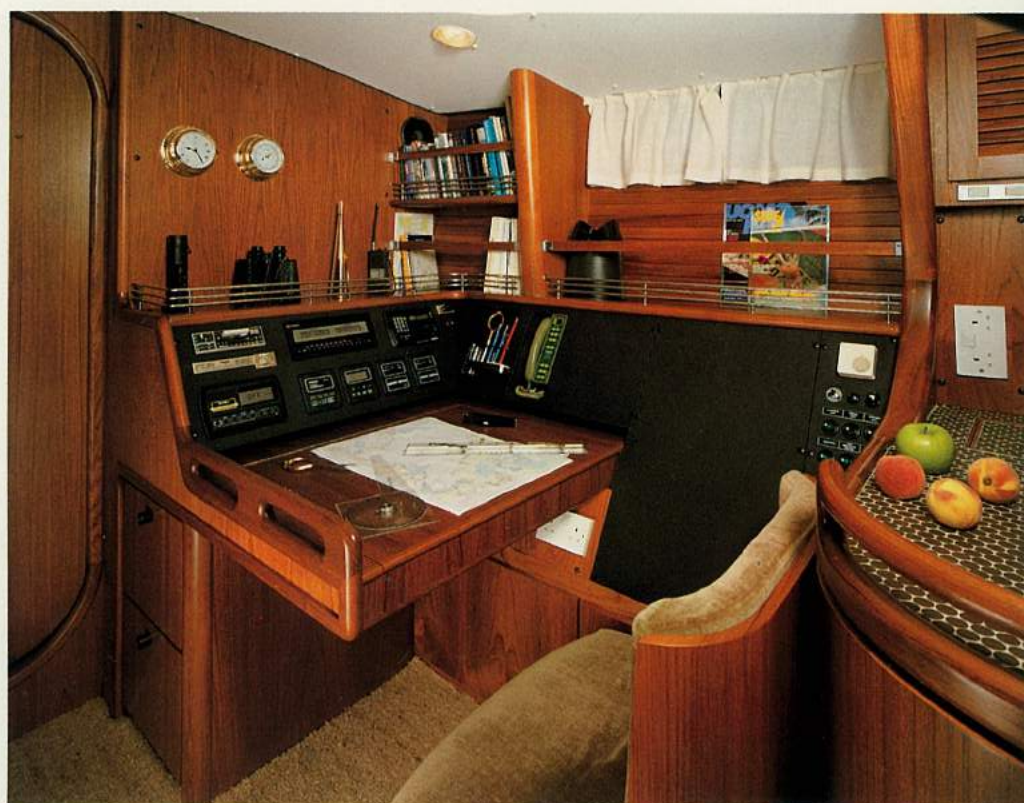
5201 AK

's-Hertogenbosch

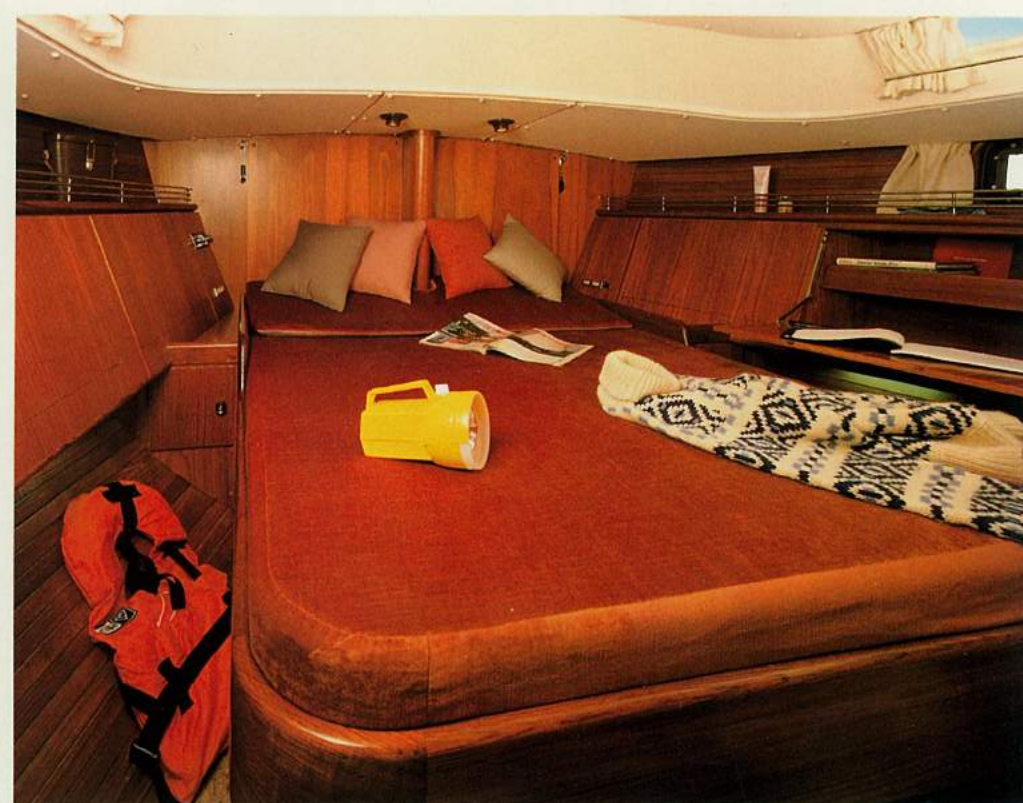
Holland

Telephone 01031-73 412455

Telex 50132



*The chart table/navigation corner – much consideration has gone into it's design and construction*



*A peek in the beautiful cabin*

will find the same exacting standards. The Trintella 45 will make you feel right at home when away from home.

**Built to customers requirements**

The Trintella yard specialises in building to their client's personal requirements. The yacht may be provided with an additional freezer, air conditioning, sloop or ketch rig, specialised navigational and communication electronics and the interior layout is discussed in great depth with each and every client. In short, the Trintella 45 offers the options of a one-off yacht with the builders experience of a well proven and tremendously successful design.

**Specification  
Trintella 45**

L.o.a.  
13.70 m (45")

L.w.l.  
10.80 m (35'5")

Beam  
4.10 m (13'5")

Draft  
2.20 m (7'2")

Ballast  
6 tons (6000 kg) lead

Displacement  
17 tons

**Sails**

**Sloop**

Mainsail  
45.1 m<sup>2</sup> (485 sq.ft.)

Genoa  
73.9 m<sup>2</sup> (798 sq.ft.)

Jib 1  
64.3 m<sup>2</sup> (693 sq.ft.)

Jib 2  
44.0 m<sup>2</sup> (478 sq.ft.)

Storm jib  
15.0 m<sup>2</sup> (161 sq.ft.)

Spinnaker  
157.1 m<sup>2</sup> (1691 sq.ft.)

**Ketch**

Mainsail  
37.4 m<sup>2</sup> (402 sq.ft.)

Genoa  
79.9 m<sup>2</sup> (860 sq.ft.)

Jib 1  
64.3 m<sup>2</sup> (693 sq.ft.)

Jib 2  
44.0 m<sup>2</sup> (478 sq.ft.)

Storm jib  
15.0 m<sup>2</sup> (161 sq.ft.)

Spinnaker  
157.1 m<sup>2</sup> (1691 sq.ft.)

Mizzen  
11.5 m<sup>2</sup> (124 sq.ft.)

Mizzenstaysail  
35.0 m<sup>2</sup> (376 sq.ft.)

**Engine**

Perkins Diesel 4.236