



TRINTELLA 42

LUXURY

PERFORMANCE

ELEGANCE

TRINTELLA 42



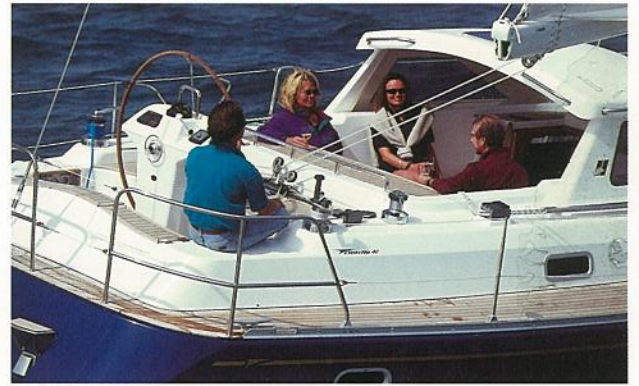
TRINTELLA 42

THE STUNNING TRINTELLA 42. A yacht that combines luxurious cruising comfort with exciting performance, and yet can be handled easily by a crew of two on long ocean voyages.

In keeping with the Trintella marque, the 42 offers an irresistible attraction to those who appreciate true character and understated elegance. The hallmark of each Trintella Yacht is undoubtedly the quality of craftsmanship that is evident in every detail of design and construction. World-renowned for advanced design and build quality, Trintella has created more than 1,000 fine ocean-going yachts in over 44 years.

Whilst steeped in Dutch craftsmanship, Trintella is unconstrained by tradition and builds on its heritage to incorporate the very latest construction techniques and technological advances, so ensuring each new yacht is one of the finest in the world. The 42 is borne from a unique collaboration with the legendary Ron Holland, with his vast experience of designing the world's most prestigious yachts, coupled with Rene van der Velden's flair for interior design.

The Trintella 42 is a yacht that meets the highest specifications to satisfy the aspirations and expectations of the most demanding customer.



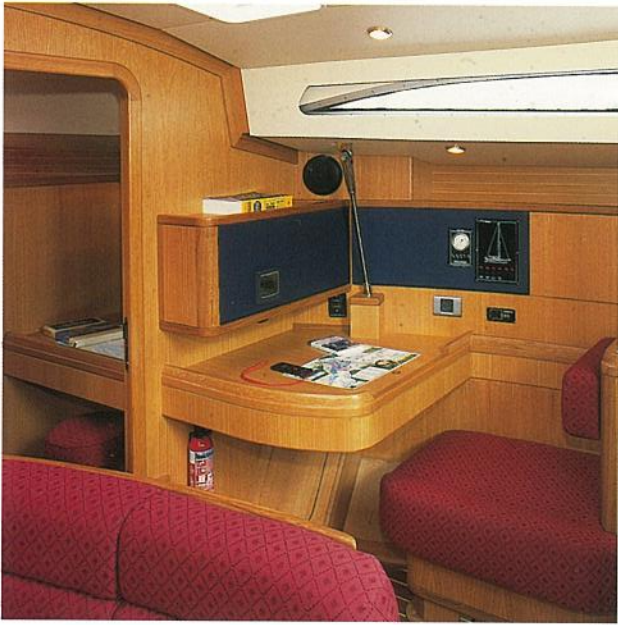
The Trintella 42 truly is a joy to sail, completely capable of handling any seas in superior comfort and safety. A distinguishing feature of all Trintellas is their uncluttered teak decks and the hugely comfortable covered guest cockpit featuring Trintella's hallmark 'Doghouse' which is both practical and secure.



There is a separate helmsman's cockpit aft, which has been ergonomically designed to be safe and comfortable and provides clear views, while keeping all controls within easy reach. While her comforts and luxurious appearance are her most obvious attributes, her performance is underpinned by the application of the most sophisticated technology. A modern, powerful rig and sail plan is designed with the specific objective of providing ease of handling without compromising performance. A custom mast incorporating triple spreaders angled at 22 degrees means there is no need for running backstays. This mainsail arrangement is further complemented by a self-tacking jib and means that the boat can be tacked by the helmsman in a delightfully unfussed

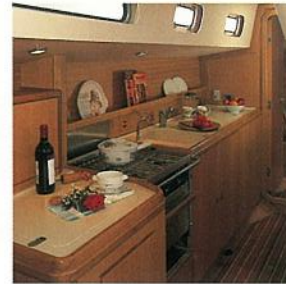
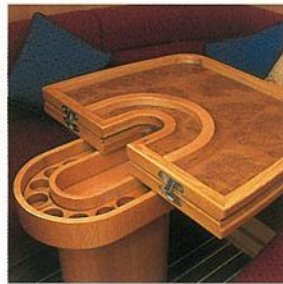
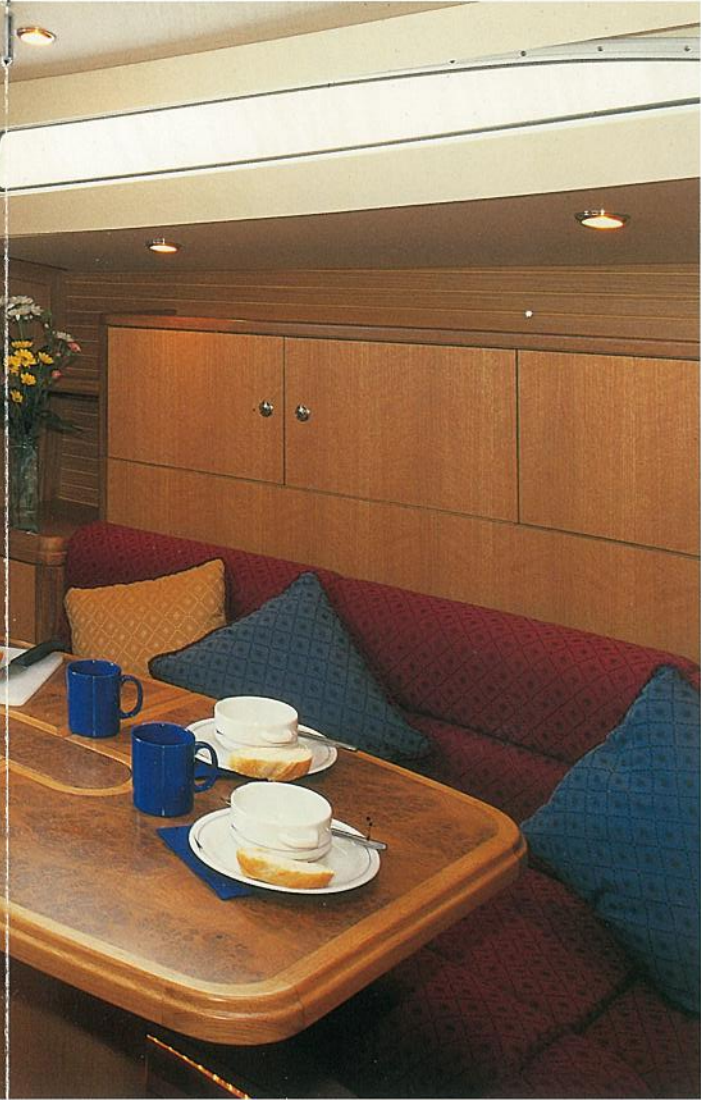
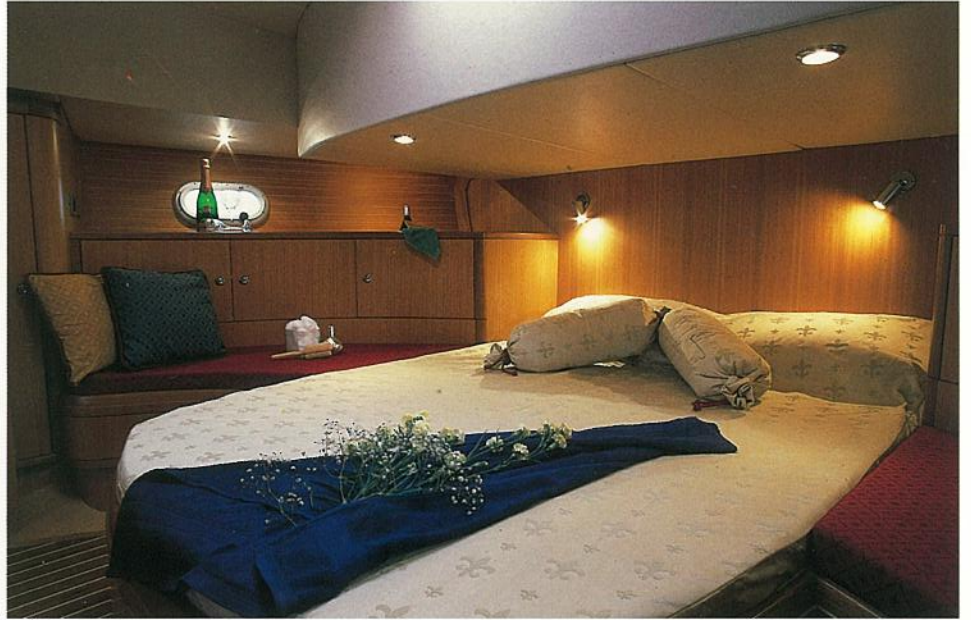
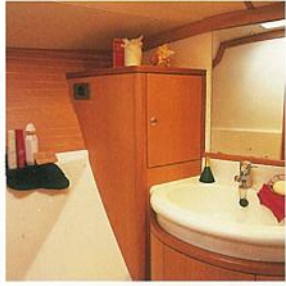
manner. Computer aided design dramatically improves hull and keel design providing superior stability and speed, while the use of aramid composites makes for enhanced safety characteristics. A sandwich construction, using the technologically advanced 'SCRIMP' process, ensures great strength and lightweight qualities and osmosis protection is enhanced by the 'SCRIMP' construction process and use of vinylester resin in the laminate. Advanced engineering techniques, complemented by efficient sail management systems, ensure the Trintella 42 is a thoroughly modern yacht that combines the best traditional values of craftsmanship with the sophisticated demands of the modern age.





The luxuriously comfortable interior of the Trintella 42 is both spacious and highly functional with generous headroom of 1.90 m or more throughout. Practical features abound and incorporate ergonomic considerations including the heavily insulated walk-in engine room that will also discretely house options such as a generator, water maker and hydraulics systems. Thoughtful but less obvious details include cedar lined hanging lockers in each cabin to keep your clothing fresh and moth-free. Above all, Rene van der Velden's

particular talent combines careful planning of the interior spaces with the delicate art of selecting woods and fabrics to create an atmosphere that makes extended cruising a constant delight. Finely styled, and elegant without being ostentatious, you can choose a wide selection of upholstery fabrics and materials to create a yacht that is as comfortable as your home and expresses your own individuality to the same degree. Available in two layouts, the Trintella 42 can provide accommodation for up to six people, with a saloon that has



comfortable seating for six and is complemented by a spacious galley designed to be safe and secure in heavy seas. You can choose to have two large cabins fore and aft (each with en-suite WC and separate shower compartment), with a comprehensively equipped navigation station carefully positioned on the starboard of the saloon: or the chart table can be moved to the doghouse, allowing two bunks to be provided there instead.

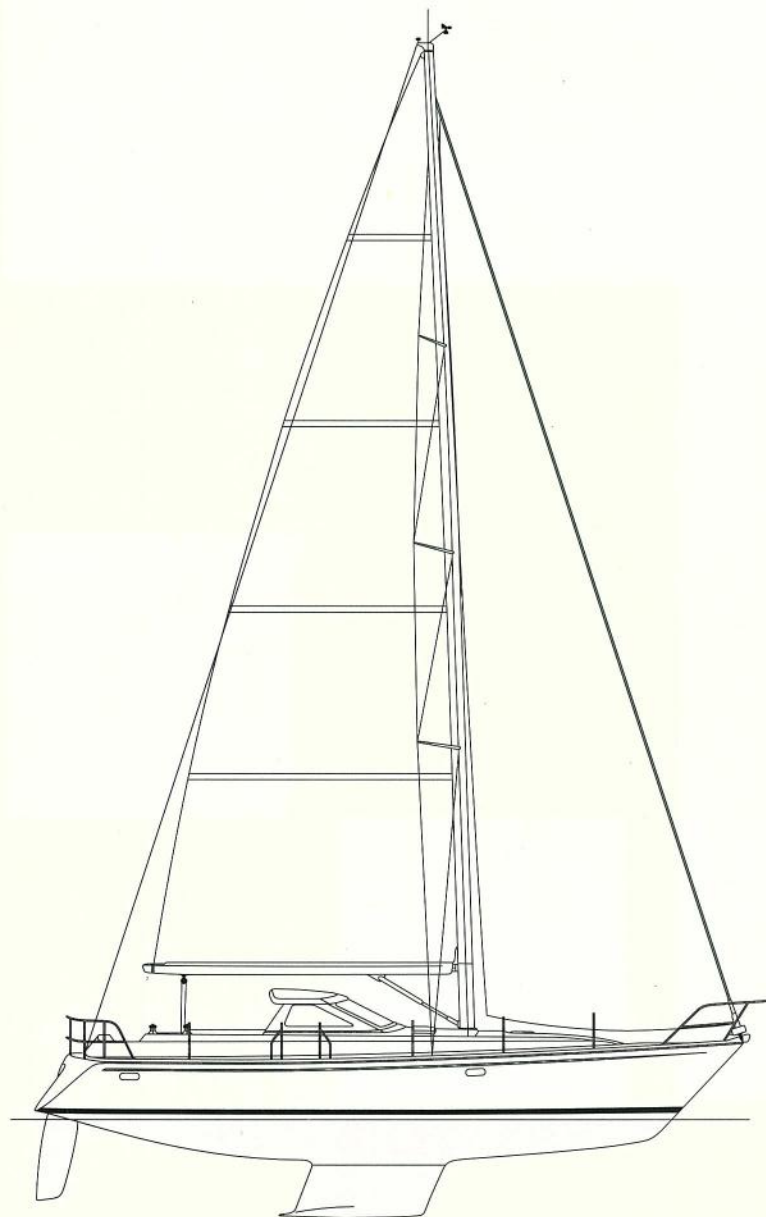
SPECIFICATION

Each Trintella is built to the highest quality in terms of design specification, craftsmanship and technological development, so ensuring quality standards you can trust. For further reassurance, each yacht is 100% guaranteed for one year from delivery, with all fixtures, fittings and equipment installed in the yacht also carrying the manufacturers' warranties and guarantees.

Besides the standard specifications detailed below, there are many variations and options that you can choose to incorporate in the design and

construction of your yacht. However you design and fit your boat, it will naturally be dockside tested before delivery, and then will undergo a full technical sail trial after delivery.

The Trintella philosophy of total quality is geared to creating confidence: our highly qualified and dedicated craftsmen demand the utmost from themselves, as indeed our owners demand the best from their yachts.



Dimensions

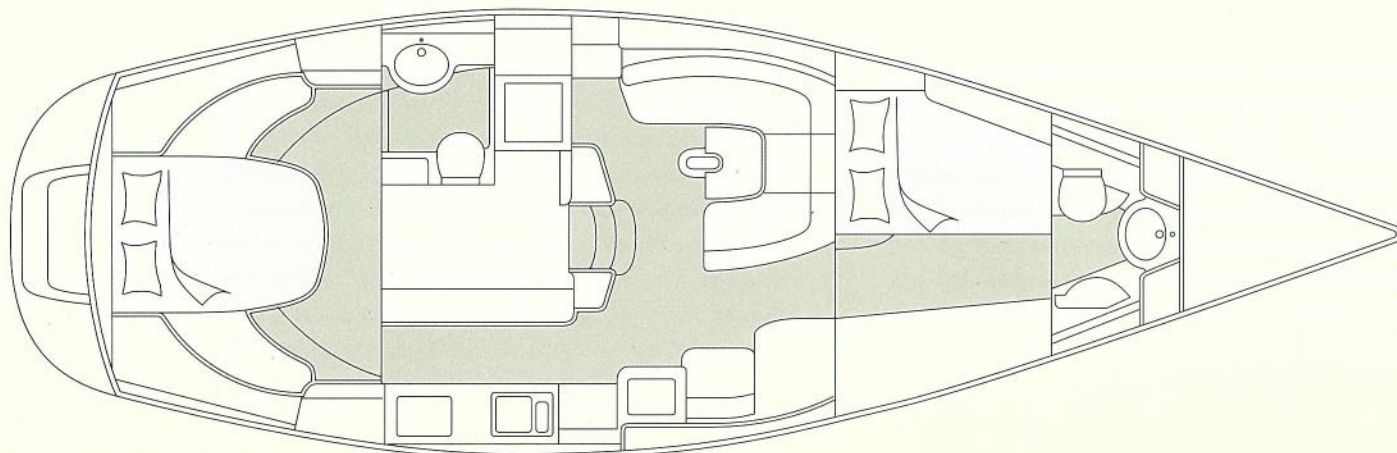
L.O.A.	42.00ft	12.80m
L.W.L.	35.95ft	10.95m
Beam max.	13.78ft	4.20m
Draft	5.90ft	1.80m
Displacement	13.50 tonnes	
Ballast	5.50 tonnes	
I	60.10ft	18.31m
J	15.42ft	4.70m
P	56.76ft	17.30m
E	18.30ft	5.58m
Bas	5.68ft	1.73m

Sail area

Main sail	51.75sqm
Blade	43.34sqm
Reacher	75.00sqm
Spinnaker	120.00sqm

Engine

Yanmar 4JH2-E	50 HP	37.5 kW
---------------	-------	---------



Construction

The hull, deck, cockpit and superstructure are made of E-glass sandwich construction, designed to meet the Lloyd's regulations, and which also provides good noise and temperature insulation. Core materials are foam and balsa and the resin is vinylester, which is highly resistant to osmosis and offers enhanced adhesion to the fibres. The whole sandwich is reinforced with E-glass and Kevlar®, vacuum infused by means of the licensed SCRIMP® process and cured under vacuum for ultimate strength and lightweight construction.

Accommodation

The standard layout offers double cabins fore and aft, each with en-suite shower and wc, with the aft cabin having a separate shower room. All hanging lockers are cedar lined to keep your clothing fresh and moth-free.

The saloon features a large settee, plus a securely fixed table with seating for six. The standard saloon layout provides a fully equipped navigation area with large chart table on the starboard side, which – if moved to the doghouse – may be varied to provide either more seating or additional bunks. The galley is positioned to starboard, aft of the saloon, and is laid out to ensure it is safe and secure in heavy weather.

All bulkheads and interior woodwork are of solid teak or teak-veneered top quality marine ply, but alternative finishes can be provided on request. Floors are laid in teak and holly, fitted with pull rings where appropriate. A wide range of attractive upholstery materials and designs is available.

Systems

The Yanmar 4JH2-E, 4 cylinder, 37.5kW (50HP) engine and other main mechanical systems are mounted in the heavily insulated engine space, which is easily accessible for maintenance. Morse single lever controls and a start/stop panel are fitted at the aft steering position, while other instruments are mounted in the doghouse.

Steering gear is a solid rod system to give optimum sensitivity. Three electric bilge pumps are installed in the saloon, engine room and forepeak bilges, together with a manual pump for the main bilge, which is operated from the cockpit.

Electrical systems

A double pole 12V circuit is fitted, with batteries charged by an extra-high output 80 amp engine-driven alternator, and the battery box is ventilated by a fan for improved safety. The electrical panel is mounted on the engine room bulkhead next to the galley, with battery monitoring gauges as well as the main circuit breakers.

Rigging

A mainsail and self-tacking jib are supplied as standard. All control lines are led aft to the cockpit, to keep the deck clear and to enable almost all sailing operations to be conducted from the security of the cockpit. All fittings are 316 stainless steel or aluminium. There is a deck stepped triple spreader aluminium mast with swept back spreaders, so precluding the need for running backstays. The mast is also fitted with a mainsail track and a self-tailing halyard winch. The aluminium boom has three internal slab reefs and a clew outhaul.

Paint finish

The hull/deck structure is coated with an osmosis resistant gelcoat, in a standard white finish, although other colours may be specified. The yacht is anti-fouled beneath the waterline. All interior wood work is matt varnished.

Deck

The deck features Trintella's trademark 'doghouse' centre cockpit for comfortable seating and excellent all round visibility. The aft cockpit provides an ergonomically designed helm station with easy access to all controls, and a Whitlock 'Reflex' steering pedestal with compass and leather covered wheel.

Besides a large sail/chain locker, there is also a jib car for the self-tacking jib and a customised heavy section anodised aluminium toerail. An electric anchor windlass is fitted, with two foot-switches. The stemhead fitting, stanchions, pulpit/pushpit, handrails and chain plates are all 316 stainless steel.

Inventory

45lb CQR anchor with 50m, 8mm galvanised chain
4 x 16mm mooring lines (2 x 12m, 2 x 8m)
4 large fenders with rope tails
2 life buoys fitted in brackets on the pushpit
3 winch handles and storage pockets
Foghorn
Deck scrubber, boat hook and deck sponge
3 fire extinguishers
Crockery, cutlery and glasses for six

Delivery/Guarantee

The yacht will be fully commissioned, including engine and sail trials, before handover to the owner in Southampton.

Trintella Yachts reserves the right to substitute items of a similar or higher quality than those described above.

A fully detailed specification will be prepared on application.





We are proud of the relationships we have developed with our customers. Your involvement begins even before you decide to purchase a new yacht from Trintella. A new Trintella is tailored to satisfy your individual requirements, and you may rest assured that each of your decisions about the detail of design and specification will be discussed and backed up by the world's finest creators of luxury yachts.

Upon delivery, our experienced after-sales team provide full familiarisation training on all aspects of your yacht's performance and maintenance needs. And wherever in the world you may find yourself, our Trintella agents will ensure you receive swift assistance. Technical advice or the supply of spares world-wide are only a phone call away from our experienced and dedicated service team.

The Trintella range includes the composite yachts from 42 to 65 feet, including the Trintella 47 winner of the Luxury Yacht of the Year 1998 awarded by Cruising World and a range of aluminium custom and semi-custom sailing and power craft from 46 feet to 90 feet.

Trintella Yachts reserves the right to change the standard inventory and equipment specification without formal notice. Please refer to the current specification sheet for confirmation. Pictures in this brochure may show a boat with optional extras and alterations to layout.

For further information or assistance please call



Trintella Yachts
Hamble Point Marina,
School Lane, Hamble,
Southampton SO13 4NB
UK
Telephone
+44 (0)1703 457864
Facsimile
+44 (0)1703 455999
E-mail
sales@trintella.co.uk

Trintella Yachts
7078A Bembe Beach Road,
Annapolis MD 21403
USA
Telephone
+1 410 295 0194
Facsimile
+1 410 295 1270
E-mail
mtbelliott@compuserve.com

Trintella Shipyard BV
PO Box 445 NL-5201 AK
's-Hertogenbosh
The Netherlands
Telephone
+31 (0) 73 6457157
Facsimile
+31 (0) 73 6450573
E-mail
trintella@wxs.nl